

CONVEYOR ACCESSORIES

SERIES 2500

Omniwheel

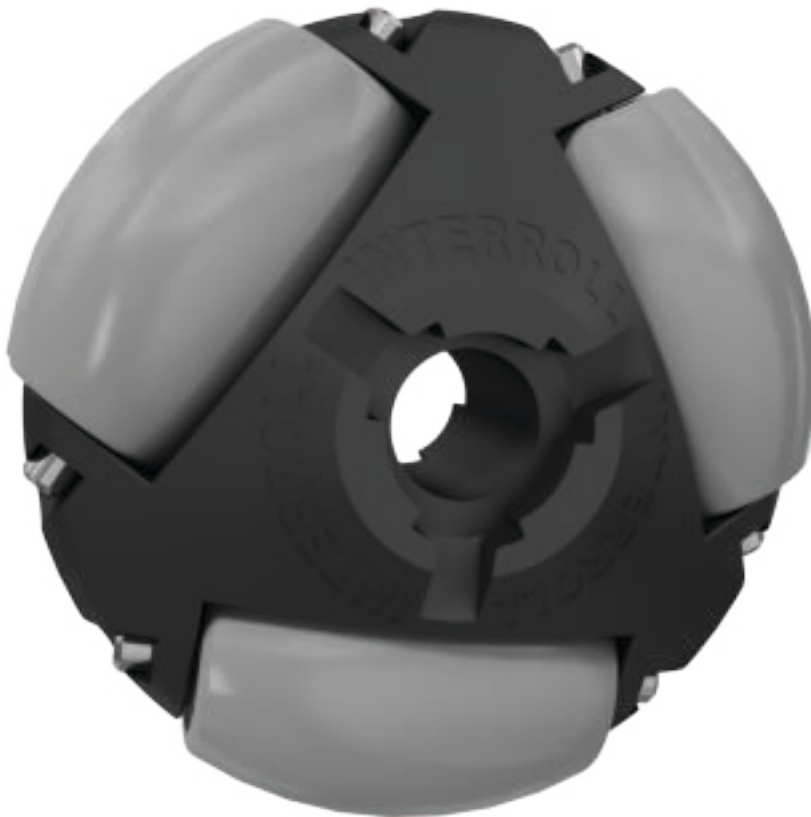


Application area

Crossings and switches can easily be implemented with the direction-independent turnability. Driven and non-driven conveyor segments, e.g. packing tables, assembly tables and feeds to processing machines. Particularly suited for softer materials such as cardboards.

Easy installation and use

Easy installation on round and hexagon shaft. With low mass and easy running gray wheels, the omniwheel can easily be moved in all directions. Several omniwheels can be coupled with one another. Corrosion-proof due to the use of stainless steel pins. Drive in one direction when used with a hexagon shaft.





Technical data

General technical data	
Platform	1500
Max. load capacity	250 N
Max. conveyor speed	0.2 m/s
Temperature range	0 to +40 °C
Material	
Housing	Polyamide, RAL9005 (jet black)
Wheels	Polyamide, RAL7030 (stone gray)
Journal	Stainless steel
Bearing version	Slide bearing
Anti-static version	No

Load capacities of series 2500

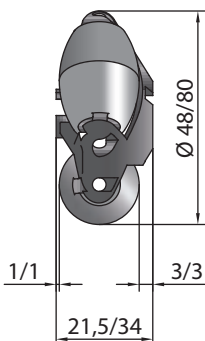
The following load capacity table refers to a temperature range from 0 to +40 °C and to one omniwheel each.

Ø Omniwheel [mm]	Hub opening [mm]	Load capacity [N]	Article number
48	8.1 +0.1/-0	50	S-64000380
	8.1 +0.1/-0 HEX	50	S-64000381
80	12.2 +0.1/-0	250	S-64000382
	11.2 +0.1/-0 HEX	250	S-64000383

HEX = hexagon

Dimensions

Omniwheel



2 Omniwheels pushed together

