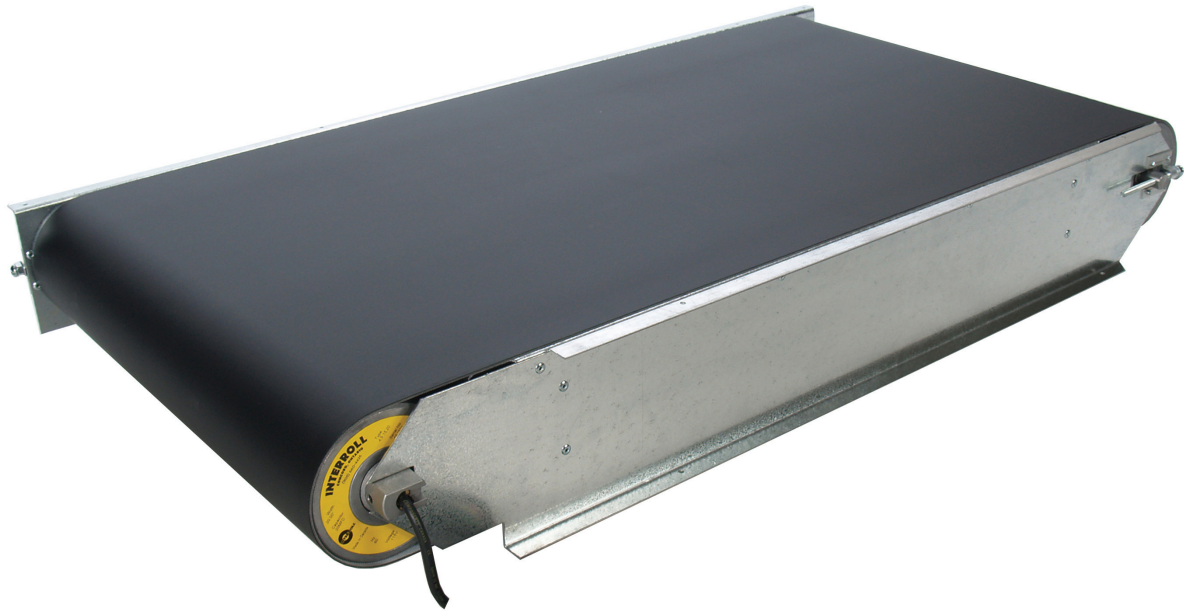




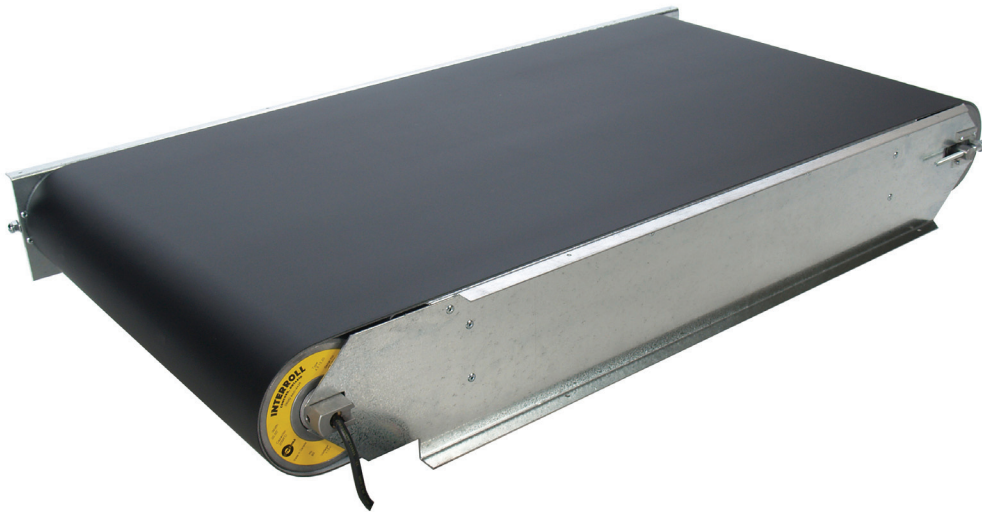
INSPIRED BY
EFFICIENCY



INTERROLL CASSETTE CONVEYOR

DRUM MOTOR DRIVEN FOR SUPERMARKET
CHECK STANDS

INTERROLL CASSETTE CONVEYOR



Product Features

- U or Z profiled frame
- All galvanized steel construction
- All stainless steel construction
- Galvanized & stainless steel construction
- Two-ply belt with PVC cover

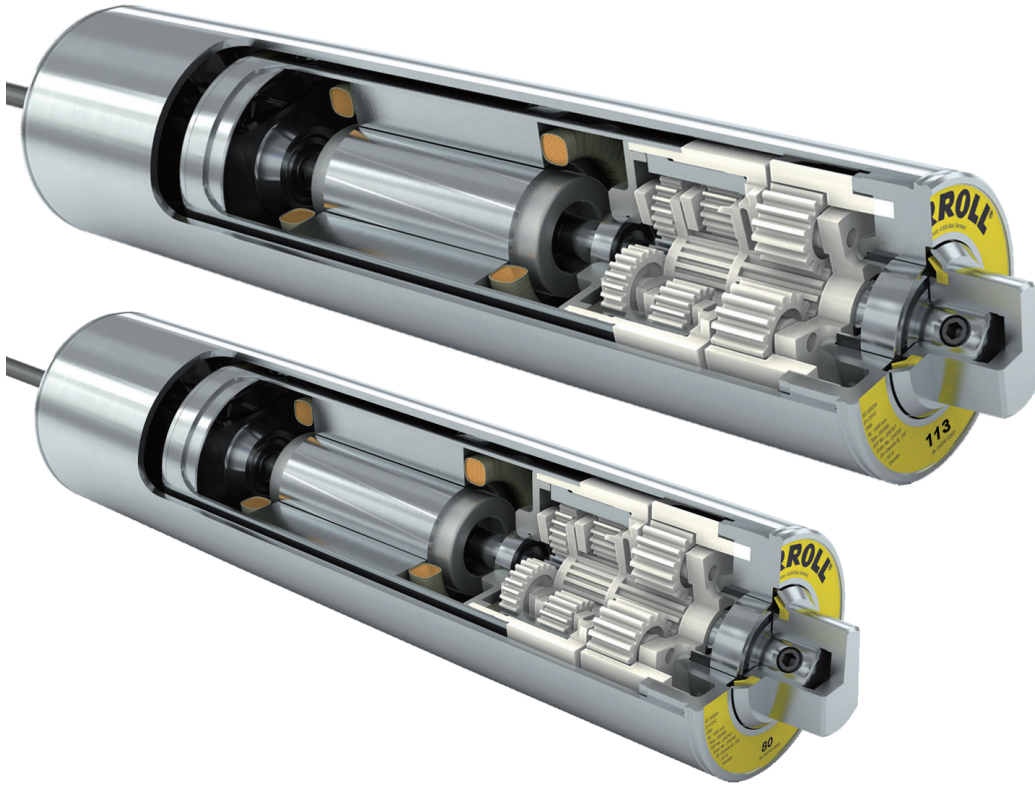
Product Benefits

- High load capacity
- Modular drop-in design

General Technical Data

Length	20" to 96"
Belt width	12" to 26"
Min. ratio length/width	2
Voltage	115V/60Hz/1Ph
Optional voltage:	230V/50-60Hz/1Ph 230/60Hz/3Ph 460/60Hz/3Ph
Drive motor diameter	113mm (4.5") or 80mm (3.15")
Idler pulley diameter	Standard 4.5" (113mm) Optional 1.9" or 3.15" (80mm)
Belt speed options	27/35/45/58 FPM
Load capacity (Max.)	Small 110 lb Medium 220 lb Large 330 lb

INTERROLL CHECK STAND DRUM MOTORS 80 & 113



Product Features

- Techno-polymer planetary gearbox
- Lightweight
- Single-rated voltage
- 3-phase or 1-phase AC induction motor
- Maintenance free
- Lifetime lubricated
- Reversible
- Low noise

General Technical Data

	Drum Motor 80	Drum Motor 113
Motor type	Asynchronous squirrel cage motor	Asynchronous squirrel cage motor
Insulation class (motor windings)	Class B	Class B
Voltage	115V +/- 5%, 1PH (IEC 34/38) 230V +/- 5%, 1PH (IEC 34/38)	115V +/- 5%, 1PH (IEC 34/38) 230V +/- 5%, 1PH (IEC 34/38) 230V +/- 5%, 3PH (IEC 34/38) 460V +/- 5%, 3PH (IEC 34/38)
Frequency	50-60 Hz	50-60 Hz
Internal shaft sealing system	Double-lipped oil seal	Double-lipped oil seal
Internal end housing sealing system	Two (2) O-rings each side	Two (2) O-rings each side
Protection rate	IP 64	IP 64
Thermal protection	Resettable bi-metal switch	Resettable bi-metal switch
Rated power, 1 Ph	0.15 HP	0.1 HP to 0.2 HP
Rated power, 3 Ph	N/A	0.25 HP
Shell speed (ft/min), 1 Ph	27 or 35	27, 35, 45 or 58
Rated torque, 1 Ph	149 in-lb and 115 in-lb	124 in-lb to 380 in-lb
Rated torque, 3 Ph	N/A	243 in-lb to 415 in-lb
Face width	12.8 - 30"	11" - 38"



INSPIRED BY
EFFICIENCY

Interroll is the most global provider of core products for material handling solutions. Headquartered in Sant'Antonino Switzerland, Interroll is present in more than 30 countries.

Additional sales contacts and addresses are available by visiting www.interroll.ca

North American Manufacturing Center

Interroll Components Canada LTD.
8900 Keele Street Unit 2 & 3
Concord ON L4K 2N2 Canada
Telephone: 905-660-4426
p.burse@interroll.com

Interroll reserves the right to modify the technical characteristics of all its products at any time.

Technical information, dimensions, data and characteristics are provided for reference only.

All products designed and manufactured in Canada.